

ARTIST STATEMENT

"Churches today are renewing their use of symbols or expanding the occasions in which symbols are used in their congregations. I hope that in integrating image and text, appreciation for the depth and diversity of Scripture's visual images will be employed in worship and other church settings with greater contextual understanding.

Lineoleum block prints by Elizabeth Steele Halstead. Reprinted by permission from Visuals for Worship, copyright 2006, Faith Alive Christian Resources.



Cedar of Lebanon

Palm Branch



ART AS WORSHIP

Art As Worship is an extension of New Life CRC's worship ministry. We believe that worship can take many different forms, including that of visual, artistic expression. Visitors are invited to take in the beauty, truth and goodness of God that is reflected in the realm of Visual Arts.

We seek to integrate art into our congregational worship with the intention to create an enriching worship space for all while engaging the broader arts community.

Artists from within and outside the church are selected to partake in annual exhibitions that feature a selection of works or theme as chosen by the Art as Worship group.

New Life

CHRISTIAN REFORMED CHURCH • GUELPH

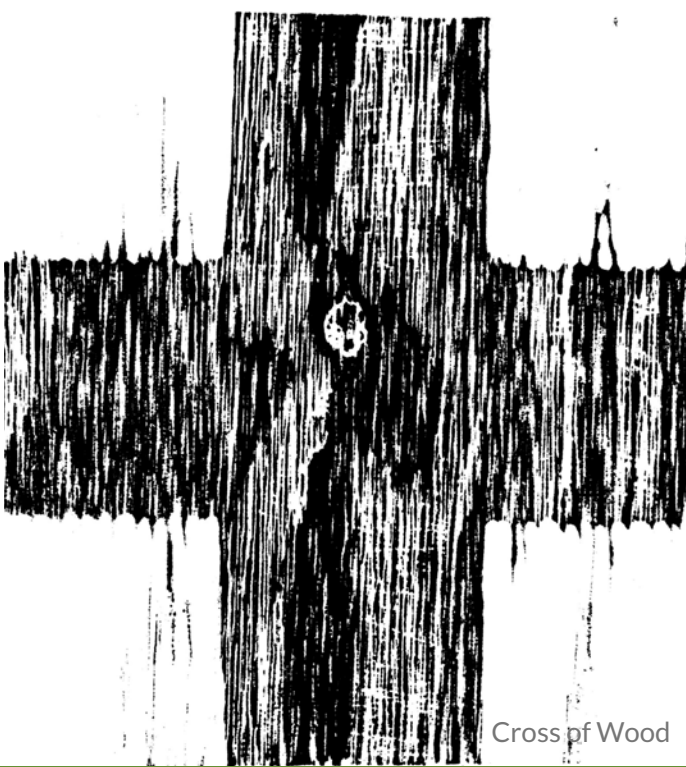
ART AS WORSHIP

Elizabeth Steele Halstead

Opening: February 18, 2018



Crown of Thorns



Cross of Wood

PROCESS

"The images are original linoleum block prints resulting from a print-making process in which an image is drawn on a block of wood covered with a thin layer of linoleum and then hand-carved to expose areas that will be white. Ink is rolled onto the block, covering the service not cut away. Paper made from the mulberry tree is laid on top and hand rubbed with a Japanese barren or wooden spoon. In transferring the ink to the paper the resulting image is a reflection of the design placed on the block."

Elizabeth Steele Halstead - Resource Development Specialist for Visual Arts

LIST OF WORKS

Cedar of Lebanon

Palm Branch

Chalice and Cross

Crown of Thorns

Cross of Wood

Kyrie Eleison

The Empty Tomb

Cross and Sun Rays

Cross (Ionic/Celtic)



400 Victoria R N
Guelph, ON N1E 5J7



519-823-5851



www.newlifecrc.net



worship@newlifecrc.net

CONTACT US

